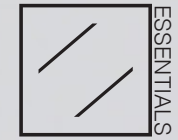


CANADA

LIRA CLOTHING 2021

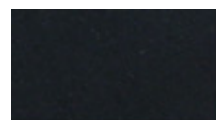


Our collective vision of the  
Essentials is to inspire and promote  
individual creativity while pushing forward  
our fundamental principles of quality and comfort.  
Every day experience is defined by  
Essentials.

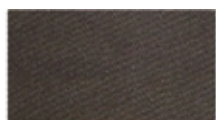
😊 AVAILABLE IN YOUTH S - XL



<b>LC6754 WEEKEND JOGGER 2.0</b>	28 - 38	98% COTTON 2% SPANDEX	<b>USA:</b> w/s \$25 msrp \$50	<b>CAN:</b> w/s \$32.50 msrp \$65
			<b>LY0001 WEEKEND JOGGER 2.0</b>	S - XL



BLACK



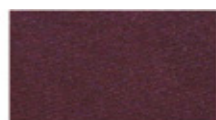
BROWN



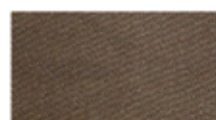
EMERALD



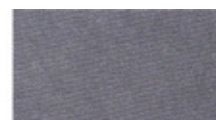
OLIVE



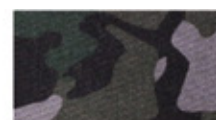
BURGUNDY



KHAKI



CHARCOAL



CAMO

😊 AVAILABLE IN YOUTH S - XL

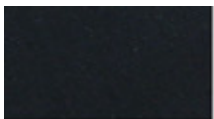


**LC6843 WEEKDAY JOGGER SHORT 2.0**  
**LY0003 WEEKDAY JOGGER SHORT 2.0**

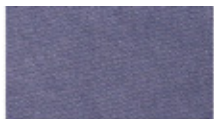
28 -38  
S -XL

98% COTTON 2% SPANDEX  
98% COTTON 2% SPANDEX

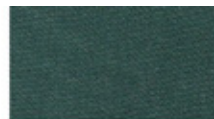
**USA:** w/s \$20 msrp \$40 **CAN:** w/s \$25 msrp \$50  
**USA:** w/s \$16 msrp \$32 **CAN:** w/s \$22.50 msrp \$45



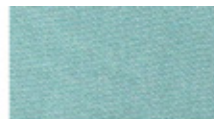
BLACK



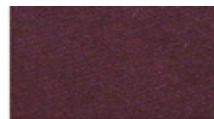
SLATE



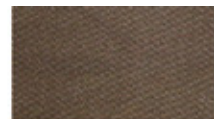
EMERALD



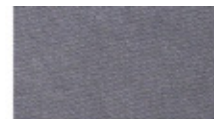
SAGE



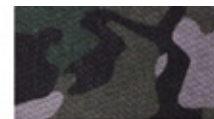
BURGUNDY



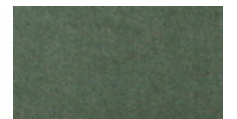
KHAKI



CHARCOAL



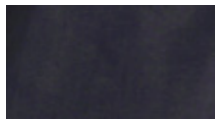
CAMO



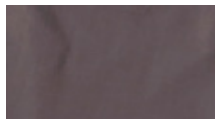
OLIVE



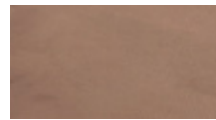
**LC7221 FULL COURT NYLON JOGGER** | XS - XXL | 100% NYLON | **USA:** w/s \$20 msrp \$40 **CAN:** w/s \$25 msrp \$50



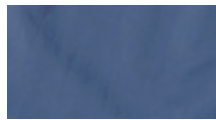
BLACK



CHARCOAL



KHAKI



SLATE



BURGUNDY



SAGE



EMERALD



STONE



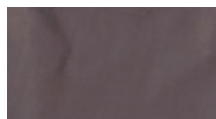
LILAC



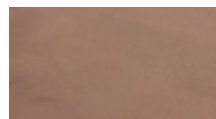
**LC7212 COURT NYLON SHORT** | XS - XXL | 100% NYLON | **USA:** w/s \$17.50 msrp \$35 **CAN:** w/s \$22.50 msrp \$45



BLACK



CHARCOAL



KHAKI



SLATE



BURGUNDY



SAGE



EMERALD



STONE



LILAC





**LE1014 PIGMENT DYE FLEECE JOGGER** | XS - XXL | 80% COTTON 20% POLY | **USA:** w/s \$20 msrp \$40 **CAN:** w/s \$25 msrp \$50



BLACK



GREY



STONE



ZINC



EMERALD





LE1015 PIGMENT DYE FLEECE JOGGER SHORT | XS - XXL | 80% COTTON 20% POLY | USA: w/s \$17.50 msrp \$35 CAN: w/s \$22.50 msrp \$45



BLACK



GREY



STONE



ZINC



EMERALD



**LC6833 SHOOTY WOVEN** | XS - XXL | 100% COTTON | **USA:** w/s \$20 msrp \$40 **CAN:** w/s \$25 msrp \$50



BLACK



GREY



EMERALD



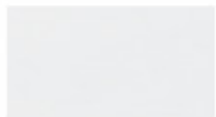
RED



MUSTARD



PINK



WHITE



ZINC



**LC6835 DOUGLAS LS WOVEN** | XS - XXL | 100% COTTON | **USA:** w/s \$22.50 msrp \$45 **CAN:** w/s \$27.50 msrp \$55



BLACK



GREY



EMERALD



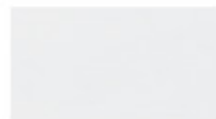
RED



MUSTARD



PINK



WHITE



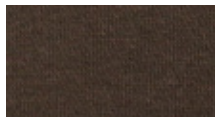
ZINC



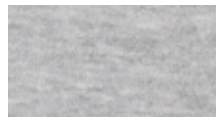
**LE1008 PULLOVER HOOD** | XS - XXL | 100% COTTON | **USA:** w/s \$24 msrp \$48 **CAN:** w/s \$27.50 msrp \$55



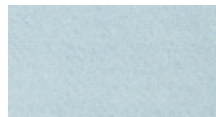
BLACK



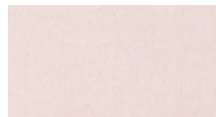
BROWN



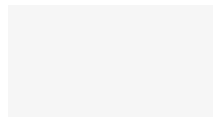
HEATHER GREY



LT. BLUE



PINK



WHITE



**LE1009 PULLOVER HOOD VINTAGE WASH** | XS - XXL | 100% COTTON | **USA:** w/s \$26 msrp \$52 **CAN:** w/s \$30 msrp \$60



BLACK



NAVY



OLIVE



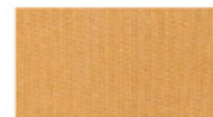
BURGUNDY



ZINC



CAMEL



MUSTARD



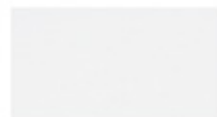
**LE1000 POCKET TEE** | XS - XXL | 100% COTTON | **USA:** w/s \$15 msrp \$30 **CAN:** w/s \$18 msrp \$36



BLACK



HEATHER GREY



WHITE



**LE1001 POCKET TEE MINERAL WASH** | XS - XXL | 100% COTTON | **USA:** w/s \$16 msrp \$32 **CAN:** w/s \$19 msrp \$38



BLACK



NAVY



BURGUNDY



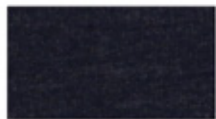




**LE1003 POCKET TEE TRI-BLEND** | XS - XXL | 50% COTTON 25% RAYON 25% POLY | **USA:** w/s \$16 msrp \$32 **CAN:** w/s \$19 msrp \$38



BLACK



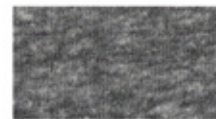
HEATHER NAVY



HEATHER PLUM



HEATHER OLIVE



HEATHER GREY



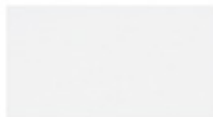
**LE1004 HENLEY** | XS - XXL | 100% COTTON | **USA:** w/s \$17 msrp \$34 **CAN:** w/s \$20 msrp \$40



BLACK



HEATHER GREY



WHITE



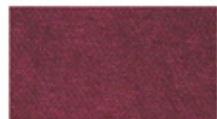
**LE1005 HENLEY MINERAL WASH** | XS - XXL | 100% COTTON | **USA:** w/s \$18 msrp \$36 **CAN:** w/s \$21 msrp \$42



BLACK



NAVY



BURGUNDY





**LE1002 VINTAGE WASH TEE** | XS - XXL | 100% COTTON | **USA:** w/s \$14 msrp \$28 **CAN:** w/s \$16 msrp \$32



BLACK



NAVY



OLIVE



BURGUNDY



ZINC



CAMEL



MUSTARD



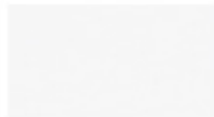
**LE1016 PIGMENT DYE TEE** | XS - XXL | 100% COTTON | **USA:** w/s \$16 msrp \$32 **CAN:** w/s \$19 msrp \$38



BLACK



STONE



WHITE



ZINC



CORAL



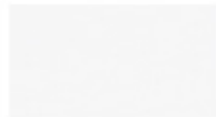
**LE1017 PIGMENT DYE LS TEE** | XS - XXL | 100% COTTON | **USA:** w/s \$18 msrp \$36 **CAN:** w/s \$21 msrp \$42



BLACK



STONE



WHITE



ZINC



CORAL



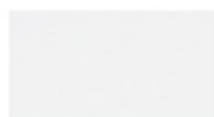
**LE1006 POCKET TANK** | XS - XXL | 100% COTTON | **USA:** w/s \$15 msrp \$30 **CAN:** w/s \$18 msrp \$36



BLACK



HEATHER GREY



WHITE





**LE1007 POCKET TANK MINERAL WASH** | XS - XXL | 100% COTTON | **USA:** w/s \$16 msrp \$32 **CAN:** w/s \$19 msrp \$38



BLACK



NAVY



BURGUNDY





**LC7112 CARSON BEANIE** | OSFM | 100% ACRYLIC | **USA:** w/s \$5 msrp \$10 **CAN:** w/s \$7.50 msrp \$15



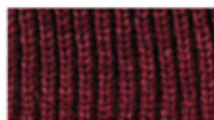
BLACK



EMERALD



OLIVE



BURGUNDY



RED



ROYAL BLUE



NEON GREEN



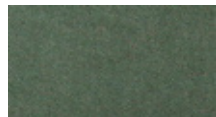
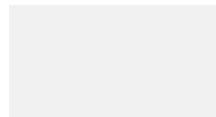
NEON ORNAGE



VINTAGE WHITE



**LC1020 PARRALEL HAT** | *OSFM* | 100% COTTON | **USA:** w/s \$10 msrp \$20 **CAN:** w/s \$15 msrp \$30



BLACK

STONE

WHITE

OLIVE

## SALES CONTACTS

**LIRA CLOTHING**  
**3421 VIA OPORTO #201**  
**NEWPORT BEACH, CA 92663**

SEAN HARRIS  
NATIONAL SALES MGR  
C. 949.929.8270  
sean@liraclimbing.com

## INTERNATIONAL

**LIRA CANADA INC.**  
**1443 RUE BEGIN,**  
**SAINT-LAURENT QC H4R 1V8**  
**CANADA (LIRA)**  
**O. 877-507-5472**

MARC-A. SAUCIER  
CANADIAN SALES MGR  
C. 877.507.5472  
marc@liraclimbing.com

JON H. GENIER  
QUEBEC & MARITIME  
C. 450.542.0396  
jonh@agencejg.com

J.S. WEIR  
WESTERN CANADA  
C. 778.320.9347  
js@waydangerous.com

